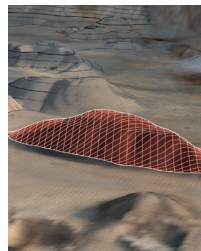


**Please
do not move**



Volume calculation

Calculate volumes based on:

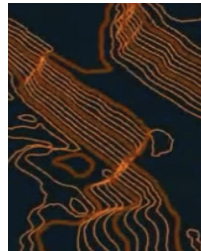
- one or two surfaces,
- compare design surface with realistic terrain,
- Import LandXML surface,



Profile lines/cross sections

Create profile lines and cross sections, and directly export to DXF - CAD compatible.

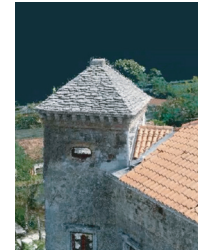
- Automatically generate unlimited number of cross section intervals (transverse profiles)



Contour lines

Calculate contour lines for better terrain representation and plot them on orthophoto or 3D model.

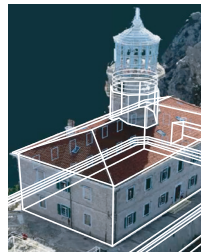
- Export them as 2D or 3D DXF



Best-in-class point cloud

Superior computer vision algorithms.

- Highly accurate results with maximum detail.
- Convert 2D images into realistic 3D models
- Complete GPU support for faster processing



Integrated CAD engine

Use CAD drawing tools to create survey maps

- No need to export data to 3rd party software
- Complete layer system support
- import for DXF files option



Orthophoto calculation

Calculate high-resolution digital orthophotos with cm/inch-grade precision

- Traditional and true orthophoto support.



Point cloud & Mesh manipulation tools

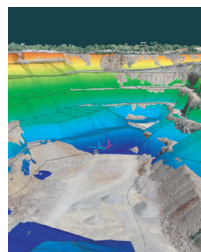
- Get the desired surface by manually adjusting the point clouds and 3D mesh.
- Move points, increase/decrease height, average height, flatten and more.



X-ray orthophoto

Generate corners and wall lines fast and precise by X-ray visualization function.

- Automatic orthophoto map of the walls.
- Create survey map of urban area easily!



Multiple data type import

- More than just photogrammetry!

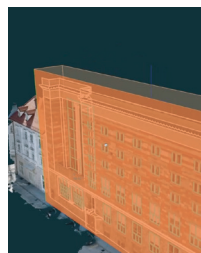
- Import: LIDAR, sonar, traditional total station data or GNSS measurements, and more.

Tiff, JPG, PNG, KMZ, obj, ply, e57, LAS, dxf, pdf, txt, xyz, doc, XML, ...



Quick sketch/reports drawing

- export sketch as PDF report
- shareable file formats
- measuring tools
- free cloud viewer available



Custom plane orthophoto

- Create orthophoto of building facade by using the custom plane tool - from any side of object.
- Use advanced CAD functions to vectorize the model.



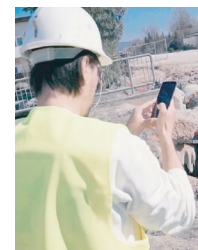
Fly path recorder

- Create stunning fly through MP4 video of your project.
- Impress your customers with the visual results.



3Dsurvey CLOUD

- Direct data upload to cloud from 3Dsurvey software
- Share projects with customers instantly
- Backup projects in the cloud
- Time comparison



Videogrammetry

- Quick and easy data collection with your smartphone
- Create realistic 3D models using smartphone videos for use cases such as documenting infrastructure works.